

Assignment Retouch

HOW TO: Retouch

30 pts

Objective:

- *The student will gain a working knowledge of the clone stamp/rubber stamp/healing brush/spot healing brush/patch tool, to correct dust, scratches, tears, etc.
- *Use of the Zoom tool, Move tool, Hand tool will also be explored
- *The student will gain a basic understanding of the layer palette and its functions
- *The student will gain a basic understanding of the history palette and its functions

1) -choose image: torn, scratched, fading, discolored image
-Scan photograph
-Will be printed on 8.5 x 11 inch paper (what size do you need to scan?)

2) open scanned image

3) make duplicate layer of background
(do not make corrections to the background layer
-work on background copy)

- go to the menu - layer - duplicate layer, click.
(after making corrections on the background copy
-click the eyeball off, what do you see?)

4) use the spot healing brush/clone stamp/rubber stamp/healing brush/patch tool, to correct dust, scratches, tears, etc.

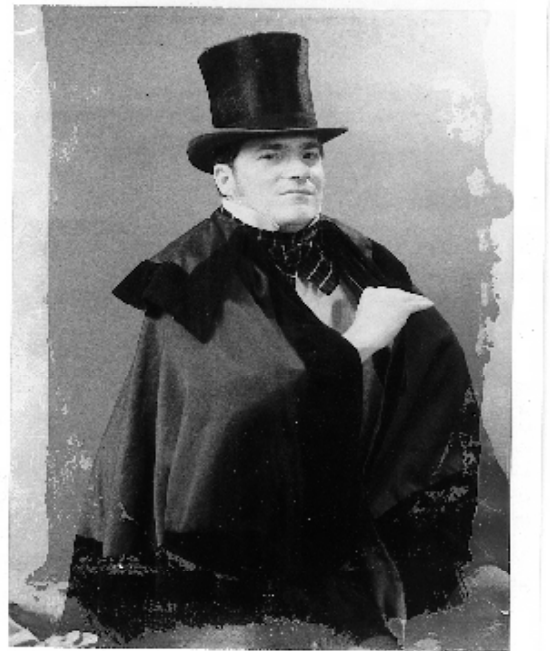
- to use the clone stamp/rubber stamp/healing brush,
 - hold down the option key, cross hair appears,
 - click the mouse in the area you want to sample from, close to the area in need of correction.
 - release the option key and clone/click.

If you are too close to the area in need of correction you can create more problems. repetitive cloning

- choose a brush size that is close in size to what needs correcting.
- use a soft edge brush.
- keep the aligned box checked.
- work at 100% or greater.

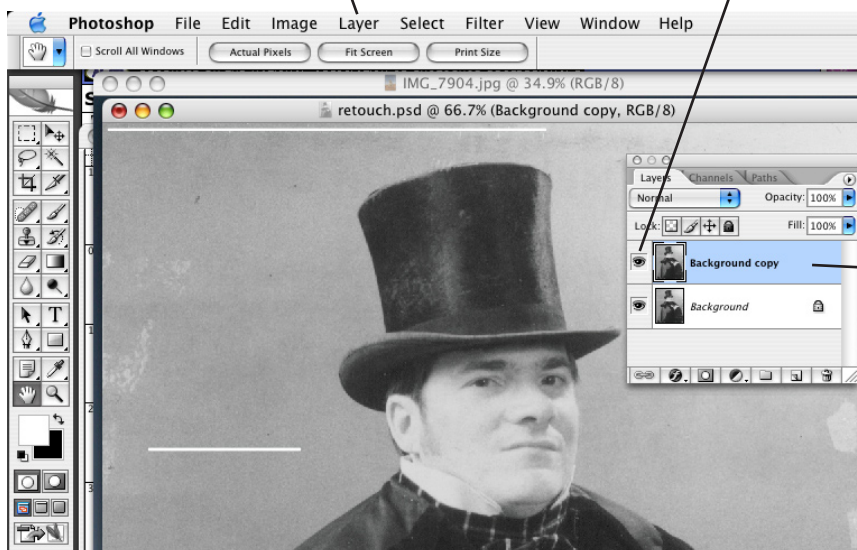
(The clone stamp has a fly out menu. What is the other tool?)

* retouching these images will take you quite a bit of time.



- layer - duplicate layer

by clicking the eyeball on and off on the background copy you can see the corrections made to that layer by viewing the uncorrected layer below



duplicate layer of background

Turn in on a CD

- 1) the original file unaltered titled: (scan) -is it a .tiff or a .psd file?
- 2) the corrected file, titled: (retouch) .psd file -Adobe RGB 1998

All layers intact (do not flatten). Work non destructively.