

UP ENRICHMENT NEWSLETTER

Mrs. Deborah Escobar, Teacher



December, 2011

DATES TO REMEMBER:

December 6—*Sprint Round tryout test, Math Counts, Activity Period Room 103*

December 9—*School Geography Bee, 3:30-5, Cafeteria*

December 13—*Target Round tryout test, Math Counts, Activity Period Room 103*

December 16—*FMS Spelling Bee, 3:30-5, Cafeteria*

December 19—*Debate Tournament preliminary round, 7:45 a.m.*

January 3—*Tryout project due for Future Engineers and Architects class*

January 13—*Grade 7 STOP "Students Together Opposing Racism" Workshop field trip, 9-1:30 pm*

January 20—*Photography Workshop, Grades 7/8*

February 2—*Future Engineers and Architects class begins*

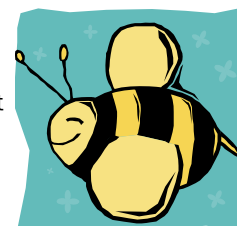
ENRICHMENT NEWS

- Tryouts were held for Math Olympiad and Debate/Law, and students have begun coaching sessions. The Debate tournament will begin on December 19.
- Tryout instructions for the Future Engineers and Architects course will be sent to students in December, and the tryout assignment will be due on January 3.
- Students have begun coaching for the Math Counts competition and the tryout rounds will be held on December 6 and December 13.
- Students have been selected for the FMS Geography Bee, to be held on December 6.
- History students have chosen their topics and have begun research. They went to the NYS Library on a research field trip on November 8.
- Ten Grade 7/8 students attended an engineering workshop at Rensselaerville Institute on November 21.
- Ten Grade 8 students attended a writing workshop at Rensselaerville Institute on October 20.
- 23 Sixth Grade students attended a mythology workshop on October 28.

FMS SPELLING BEE

The FMS Spelling Bee will be held on December 16. Students can begin practicing the words that will be used in the bee by going to the enrichment website, <http://myteacherpages.com/webpages/fmsenrichment>, and checking out the announcements page for the links to the study lists. In addition, the website has study resources available in both the Booklist and the Links sections.

Six FMS students will represent FMS at the Regional Spelling Bee. Mateen Sharif, the Regional winner last year, and Bill Dong, who scored in the top four at last year's Regional, are both automatically nominated for this year's Regional Bee. The four additional students from FMS will be determined during the school bee.



FMS GEOGRAPHY BEE

This month, students have the opportunity to participate in a screening test that will help select finalists to go into the FMS National Geography Bee. Twenty-five students will be invited to participate in the first round of the bee, which will be held after school on December 9th. Ten finalists will compete in a final round, to be held immediately after the preliminary round. The school champion will then take another multiple-choice test, which is forwarded to the National Geographic Society for consideration as a State finalist. The State Bee will be held at the NYS Museum in the Spring.

The National Geography Bee website: www.nationalgeographic.com/geography_bee/ has interactive quizzes that can help students prepare for participation in the Bee. The enrichment website also has resources available.

EXAMPLE BEE QUESTION:

Cotopaxi National Park takes its name from snow-capped volcano summits. This park, which is located 50 miles south of the Equator, is in which country along the eastern rim of the Pacific?

- Chile
- Colombia
- Ecuador



ENRICHMENT DURING ACCESS OR TUTORIALS

Students are often invited to take mini-courses during non-music access periods and/or tutorials. Students are selected for these offerings by their core teacher(s) and enrichment teacher, and invited to participate based on their abilities and need for a challenge. Students also have the option to express their interest and be considered for many of these groups. The following groups meet throughout the year:

Philosophy — Discussion groups in which students think on a deep level about concepts such as ethics, truth, beauty, the nature of the world, etc. October-December for grades 6, 7, and 8.

Math — Classes emphasize problem-solving, patterns, geometric constructions, etc. Grades 6 and 7, begins in January.

Writing — The Grade 7 Reading/Writing course focuses on science fiction. Students read selected stories and then write a story of their own. The Grade 8 course emphasizes nonfiction reading and writing skills.

Reading— Sixth grade groups emphasize critical thinking, active reading and inquiry in a discussion group format.

These reading groups take place during the class reading time.

Parents can help the goals of the enrichment programs by encouraging their students to take advantage of challenging learning opportunities.

THE FMS RANDOM TIMES NEWSPAPER



FMS now has its own online newspaper, *The FMS Random Times*. Student editors and reporters have been hard at work to create news articles; creative stories and poetry; music, book, and movie reviews; photography; and much more. The first issue was published on October 31 and has received much favorable feedback from the school community. The community can view the newspaper at <https://sites.google.com/site/thefmsrandomtimestimes>.

The newspaper includes many sections. The “News” section includes articles about events, team, or club activities; as well as news reports on personal accomplishments that FMS students or teachers have made. There is also an “FMS and the World” section which reports on current events from a student perspective. The Sports section includes news from interscholastic teams. An opinion section features an editorial, student letters to the editor, and an advice column. And finally, our Photography section highlights original student photo creations in a slideshow format.

Though the newspaper has a staff of student editors and reporters, we welcome and encourage submissions from any student in the school. Students who would like to see their creative work displayed in the newspaper, or who have an idea for a story they would like to cover, are invited to email their ideas or writing pieces to fmsrandomtimestimes@gmail.com. If anyone would like to become a reporter, please see Mrs. Escobar in Room 101. Newspaper meetings for reporters occur every other Friday at 7:45 a.m.

ENRICHMENT AND SNOW DELAYS OR SNOW DAYS

When there is a snow day or delay, the early morning UP enrichment courses (Debate/Law, Math Olympiad, History, Vocabulary, Future Engineers/Architects, Newspaper, etc.) will be canceled for that day. This decision was made because in the event that a before-school class were to start one or two hours later, many stu-

dents would lose their parental rides to school. In the event of a snow day, there is an impact on the A/B/C/D schedule for day-time classes. Students are aware that if a class is scheduled for what becomes a snow day, they would most likely have that class on the day that we return to school, or on the next day that is the same letter as was originally

scheduled.

If a snow delay or snow date affects a competition (for example, a Math Olympiad meet or National Geography Bee), students would be contacted with an alternate time/date for the contest.

