

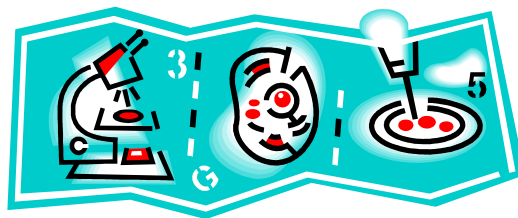
Biology I Honors Course Expectations (2011-2012)

Instructor: Mr. Lenze

Room: 913

E-mail: blenze@interact.ccsd.net

Class Website: <http://www.mrlenze.com>



Course Scope:

This is a one-year course that is designed around introductory biological concepts designed for the academically oriented student. Emphasis is placed on developing critical thinking skills, research skills, and laboratory techniques. Independent study projects and inquiry-based learning experiences are integral parts of the course requirements. The course fulfills one of the two high school graduation requirements for science and college entrance requirements for laboratory science.

Course Goals:

1. To utilize the nature of science through scientific processes of inquiry.
2. To safely conduct original investigations.
3. To evaluate the development of biological concepts in a historical context.
4. To develop explanations based on evidence.
5. To explain how genetic information is passed from one generation to another.
6. To describe how all life forms, at all levels of organization, use specialized structure and similar processes to meet life's needs.
7. To describe how the ecosystems display patterns of organization, use specialized structure and similar processes to meet life's needs.
8. To investigate diversity of life as explained through biological evolution.
9. To analyze the transformation of energy related to living organisms.
10. To explore the chemistry of life processes.
11. To explore career opportunities related to biology.
12. To discuss moral and ethical issues related to biological concepts.
13. To demonstrate an understanding of character, ethics, safety skills, and manners appropriate for this course.

Units of Study

Quarter 1:

- Human Biology (begin and continue all semester 1)
- Unit 1: Nature of Science (3 weeks)
- Unit 2: Chemistry of Life (3 weeks)
- Unit 3: Cellular Biology (1 week) & Cell Transport (2 weeks)

Quarter 2

- Unit 4: Cell Energy (2 weeks)
- Unit 5: Cell Cycle, Mitosis and Meiosis (3 weeks)
- Unit 6: DNA Structure and Function (4 weeks)

Quarter 3

- Unit 7: Mendelian and Human Genetics (4 weeks)
- Unit 8: Evolution and Diversity (3 weeks)
- Unit 9: Human Biology (Review and Complete) (2 weeks)

Quarter 4

- Unit 10: Taxonomy and Classification (4 weeks)
- Unit 11: Ecology (4 weeks)

NOTE- Weeks spent on each topic are subject to change as needed.

Classroom Policies and Expectations

- Follow all Coronado High School and Clark County School District rules, policies, and procedures (Refer to Student Planner and CCSD Behavior Guidelines for Secondary Students).
- No cell phones, headphones, PDA's or makeup are to be seen in this room. They will be confiscated and given to the dean.
- Follow the 3 Be's; Prepared, Respectful, and Here Now.
- Follow all instructions the *first* time they are given.
- Keep your work area clean before, during, and after all classroom activities.
- Safely conduct yourself and properly handle equipment during labs and activities (*see lab safety rules.*)
- Be honest, trustworthy, and strive for continued improvement.
- Be actively involved by participating, listening, producing quality work, and helping others do the right thing.
- You must be seated and ready to learn when the bell rings.
- Seating and lab partners are assigned by the teacher
- Backpacks and other personal belongings not related to this class will be placed under your table; leave personal items out of sight.
- Bottled water with a lid is permissible; no other food or drink is allowed in classrooms.
- All assignments are posted on the board and will be copied by each student in the student planner.
- The student planner is used as a hall pass.
- All assignments will have the same heading (Name, Period, Date)

- Students must maintain a clean and undamaged room and equipment; student fine cards will be issued for non-accidental damages.
- Remain seated until you are dismissed by the teacher. ***Do not pack up early.***

Consequences:

All students will behave appropriately in class. Behavior that interferes with or distracts another student from learning or interrupts teaching will not be tolerated. If you choose to break a rule or do not follow procedures, the following consequences may be initiated:

- | | |
|---------------------------------------|----------------------|
| 1. Verbal warning/corrective training | 4. Teacher detention |
| 2. Conference with student | 5. Dean referral |
| 3. A phone call home | |

During teacher detentions students will be cleaning the room, which includes scrapping gum off chairs and desks, sanding off graffiti, cleaning desks, etc.

Attendance/ Tardies

Attending class everyday and being on time shows responsibility and respect, 5% of your grade will be based on participation and attendance. *Students that exceed ten unexcused absences in a semester will receive a failing grade and lose class credit (This is a CCSD Policy).* Students are expected to be prepared and ready to start class when the bell rings. Any class activity missed due to unexcused tardies will not be made up and will result in a zero grade. Arriving late is disruptive to the class, please make your best attempt to be present and on time! There is a tardy lock out every period, so students will be sent to the Dean's Office if tardy.

Grading Policies:

Quarter Grades will weighted as follows-

Class work/ Homework	15%
Tests/ Quizzes	60%
Projects/ Labs	20%
<u>Attendance/ Participation</u>	<u>5%</u>
Total	100%

Semester Grades

Quarter 1 =	42.5%
Quarter 2 =	42.5%
<u>Semester Exam =</u>	<u>15%</u>
Total for Semester:	100%

Grading Scale-

- 90%-100%= A
- 80%-89.9%= B
- 70%-79.9%= C
- 60%-69.9%= D
- Less than 60% = F

Citizenship Grading Scale-

- "O" = Student has achieved a **superior** performance in the areas of self control, respect, attitude, cooperation, preparedness, and excellent attendance.
- "S" = Student has achieved average performance in the areas of self control, respect, attitude, cooperation, preparedness, and good attendance.

"N" = Needs improvement.

"U" = Student has achieved below average performance in the areas of self control, respect, attitude, cooperation, preparedness, and poor attendance.

Tests/Quizzes

Tests may be in the format of a written test (e.g. multiple choice, true/false), essay exam, or performance based assessment (i.e., practical). A unit exam will be given at the closure of each unit. This will be approximately every 2-4 weeks, 11 total for the year. Quizzes will be given every 1-2 weeks. The quizzes are a quick way for the teacher to monitor your understanding of homework, labs, class work, and vocabulary. Upcoming Exam dates and schedules quiz dates will be listed on the class website.

Homework

Each student will be issued a password to access our online textbook (a PDF of the book can be found on the class website). Students will complete reading assignments, concept maps, and reading quizzes online. Students that do not have access to a computer may use the library computers, or be issued a hard copy of the text/assignments (upon request). There will also be assignments that need to be turned in person, when class begins. The teacher will provide turn in instructions for each assignment. All homework is due at the beginning of class the following day unless noted otherwise. **LATE ASSIGNMENTS ARE NOT ACCEPTED.**

Lab Work

Lab work is an important part of this course. You will have to submit a formal lab write up for each lab write up that we do. The lab write up will follow the CHS Science Department guidelines.

Notebook

It is extremely important that you keep an organized notebook and bring it to class every day. You are required to have a 3 ring binder to keep your work in, but you may organize it as you see fit.

Two suggestions are below:

1. Have a sections for each unit (see page 2 for units)
2. Include following sections:
 - Notes
 - Classwork/Homework
 - Labs/Projects
 - Quizzes/Tests

Projects

As an honors student, you will be required to complete some student-centered projects throughout the year. It is important to note that some projects may be completed as small group, or, if you prefer, as an individual. Any person choosing to work with a group is doing so at their own discretion and will be held accountable for ALL work performed by the group.

Participation

To obtain full participation points, students need to be on time, begin the QOD (a question posed to students at the beginning of class which they are to answer in their notebooks) and follow all rules, procedures, and instructions. Students must also participate in class discussions and lecture questions. Coming to class unprepared (see supply list) may result in a loss of participation points.

Make-Up Work:

- Late Work*- As this is an honors course **LATE WORK IS NOT ACCEPTED**. Students are expected to turn in all assignments on time, or they will receive a zero for the assignment.
- Tests/Quizzes*- Students who are absent on the day of a previously announced major quiz or test must be prepared to take the assessment immediately upon return from the absence (during class). If this is impossible due to extenuating circumstances, the student will have 3 days to schedule a make-up session. The test or quiz must be made up within one week.
- Homework/classwork/notebooks*- After an absence, you have 3 days to make contact and obtain appropriate make up classwork and homework. You are expected to obtain the work the day that you return to school and complete the work in the same amount of time your classmates had.
- Labs*- If you miss a lab due to an absence, you will also have 3 days to obtain your makeup work. There will be several lab make-up days offered after school. Usually one every 3 weeks. However, due to the difficulty of doing some of the labs after school, you may be assigned an alternative form of the lab. Alternative forms include, but are not limited to virtual labs and dry labs (which is where we provide you with the data). The lab alternative will cover the same material, but in a different way.
- Prearranged Absences*- work is due the day a student returns from a prearranged absence.
- If Absent*- A monthly chart listing all homework assignments will be kept in the room. It will also be available online (on the class website, click on "My Calendar"). Handouts and notes will be available in the crate, online, or from a friend. Upon returning from (or even during) an absence, check these sources for your assignments. It is the students' responsibility to obtain make up work, not the teachers! Notes missed must be hand copied into your own notebook. If you need any assistance obtaining make-up work, please do so before or after school, not during class.

Supply List- these materials need to be with you each day, your teacher may do random checks for them. If you do not bring these materials, you may lose participation points. If you have difficulty getting any of these supplies, please see the teacher before or after school for assistance. **IT IS NOT REQUIRED, BUT YOU MAY WANT TO ALSO GET A PENCIL CASE TO HOLD EVERYTHING!!**

<input type="checkbox"/> Pens
<input type="checkbox"/> Highlighter
<input type="checkbox"/> Pencils (#2)
<input type="checkbox"/> Paper (lined)

<input type="checkbox"/> 3-ring Binder (1.5 inch minimum)
<input type="checkbox"/> Colored Pencils (12 colors minimum)

Textbook- Each student will be assigned a login and password to access a full virtual, online textbook. This will be our primary text. Physical books can be issued for students that do not have easy internet access or prefer to have a text in hand (please see the teacher before or after class within the first week if this is the case).

Student Assistance

Any student who requires additional help with an assignment or needs to speak to me should see me after school. I am available from 2:11 to 3:00pm Monday through Thursday.

Note: *This course syllabus is subject to change and may be adjusted to meet changing circumstances as the school year progresses. If this occurs, the student will be issued revisions.*